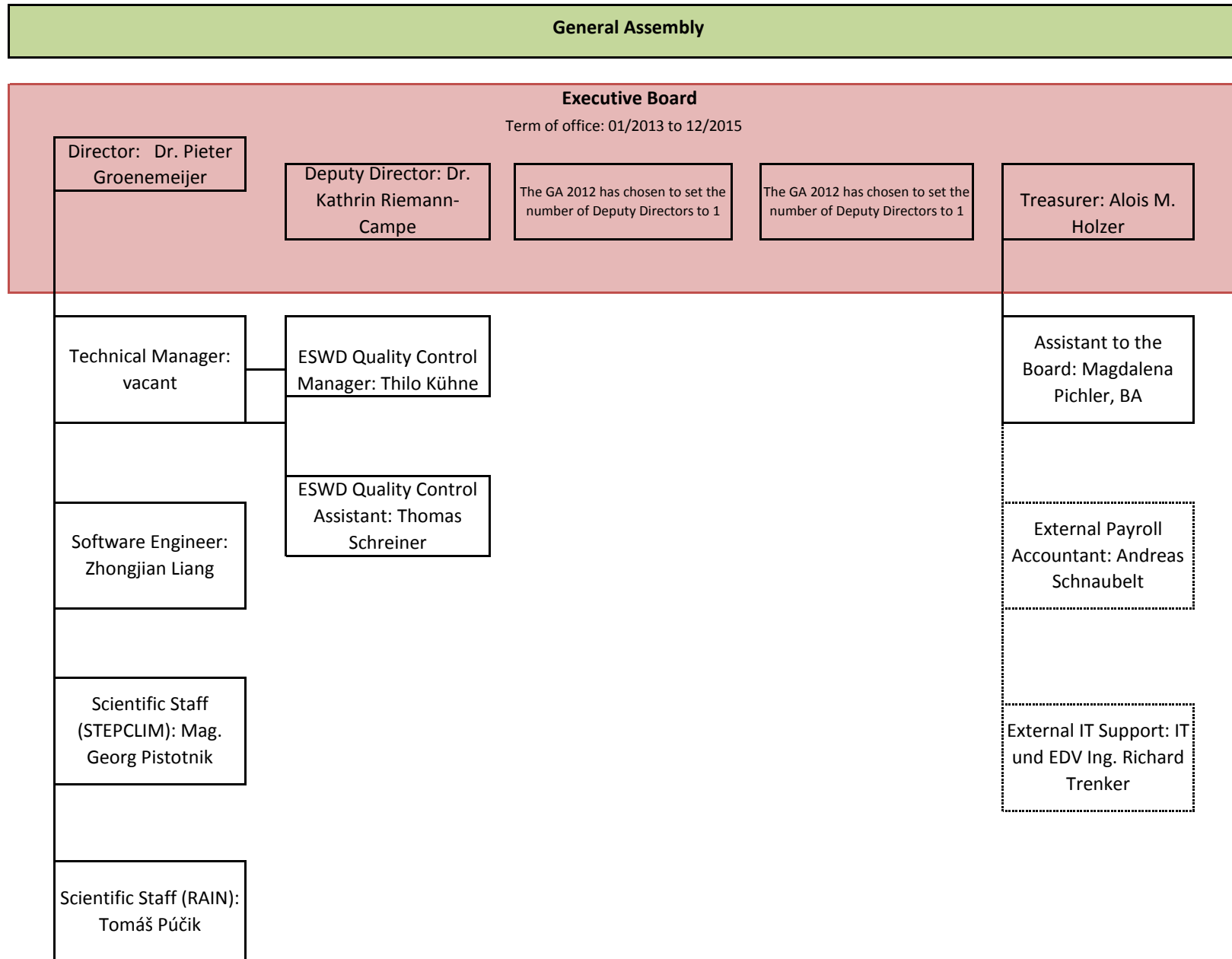


ESSL Organigram



ESSL Advisory Council (Term of office: 4 years)

	End first term of office	End second term of office
⁸⁶ Hans-Joachim Koppert elected Oct. 2010, re-elected Oct. 2014 (NWS)	31.12.2014	31.12.2018
³⁶ Prof. Dr. Vincenzo Levizzani elected Oct. 2008, re-elected Sept. 2012 (Sci)	31.12.2012	31.12.2016
³⁵ Dr. Pertti Nurmi elected Sept. 2012 (NWS)	31.12.2016	
³² Prof. Dr. Robert Sausen elected Sept. 2007, re-elected Oct. 2011 (Sci)	31.12.2011	31.12.2015
³⁴ Prof. Dr. David Schultz elected Oct. 2008, re-elected Sept. 2012 (Sci)	31.12.2012	31.12.2016
³¹ Dr. Michael Staudinger elected Jan. 2008, re-elected Oct. 2011 (NWS)	31.12.2011	31.12.2015

(Chair: Prof. Robert Sausen, Vice-Chair: Hans-Joachim Koppert)

Abbreviations: NWS National Hydro-Meteorological Services or EUMETNET, Sci Science

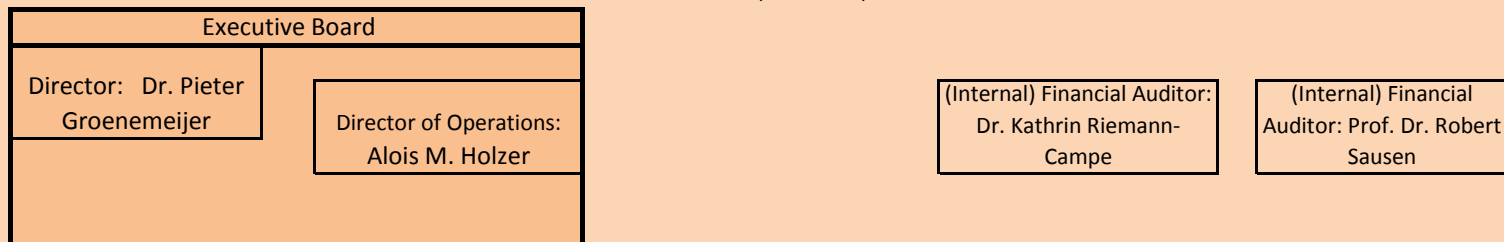
ESSL Assessors to the Board

		Beginning of office	If specified, field of activity
10	Dr. Martin Setvák	01.10.2008	ESSL representative at Satellite CWG (co-chair)
12	Jenni Rauhala	01.10.2010	ECSS
27	Mag. Thomas Krennert	01.10.2010	ESWD
2	Dr. Bernold Feuerstein	01.01.2012	Windspeed Scales
221	Tomas Pucik	01.01.2012	Forecasting practice
0			

The EB can appoint up to 6 Assessors to the Board. Their term of office ends by resolution of the EB or demission.

Offices in subsidiary "European Severe Storms Laboratory - Science and Training"

Term of office: 01/2015 to 12/2017



ESSL EB, last revision on 13 November 2014

No responsibility is taken for the correctness of this information, which is for overview purposes only.

Official assembly and meeting minutes shall prevail.