

Local travel information

for your trip to the ESSL Research and Training Centre

in Wiener Neustadt, Austria

Airport and Trains

The closest international airport is VIE (Vienna International Airport) with a lot of direct connections to destinations in Europe and worldwide.

From the airport there are frequent train connections to Vienna, either by the City Airport Train (CAT) to central Vienna, local commuter trains (S-Bahn) or fast direct trains to Vienna Main Train Station (Wien Hauptbahnhof). In most cases you will prefer a train via Wien Hauptbahnhof, because from there you have direct fast connections to Wiener Neustadt (sometimes abbreviated with Wr. Neustadt).

Please use the following website, the route planner and online ticket shop of the Austrian Railways OeBB, to find your best connection from the airport or from Vienna to Wiener Neustadt:

<http://fahrplan.oebb.at/bin/query.exe/en>

Enter from “Flughafen Wien” to “Wiener Neustadt Hauptbahnhof” and be sure to take a fast connection with only one change in Vienna. In case you miss one train, no problem, simply take the next one, your ticket is valid in all trains.

Wiener Neustadt

Although the mostly booked hotels are not far from the train station (Wiener Neustadt Hauptbahnhof), you can choose a taxi in Wiener Neustadt, if you prefer to bring your luggage easily to the hotel. The taxi stand is situated in front of the main exit of the train station.

You can also order a taxi via phone: +43 2622 25500 or +43 2622 22000

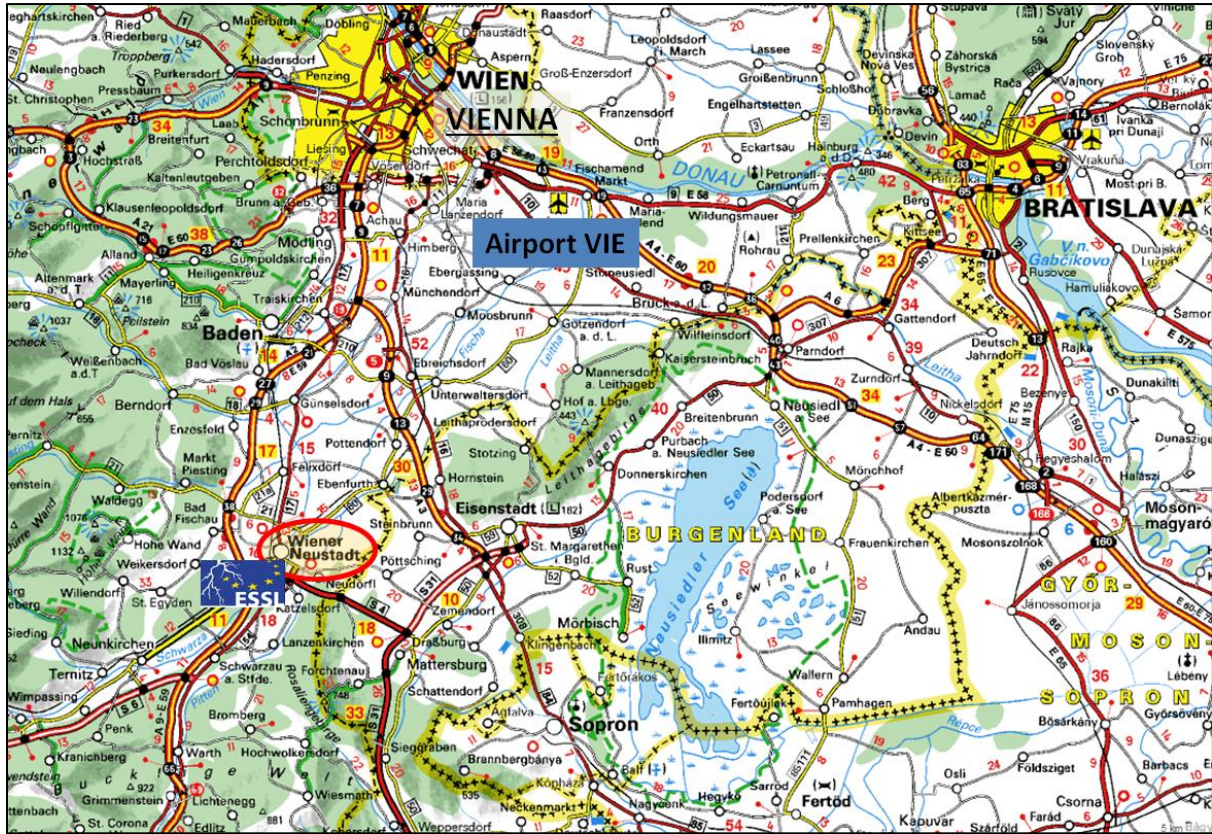
Help, I am lost

In case you need personal assistance in Austria, please call Katja Dorninger from the ESSL team. She will try to advise and help you as much as possible. Her phone number is **+43 664 132 73 02**

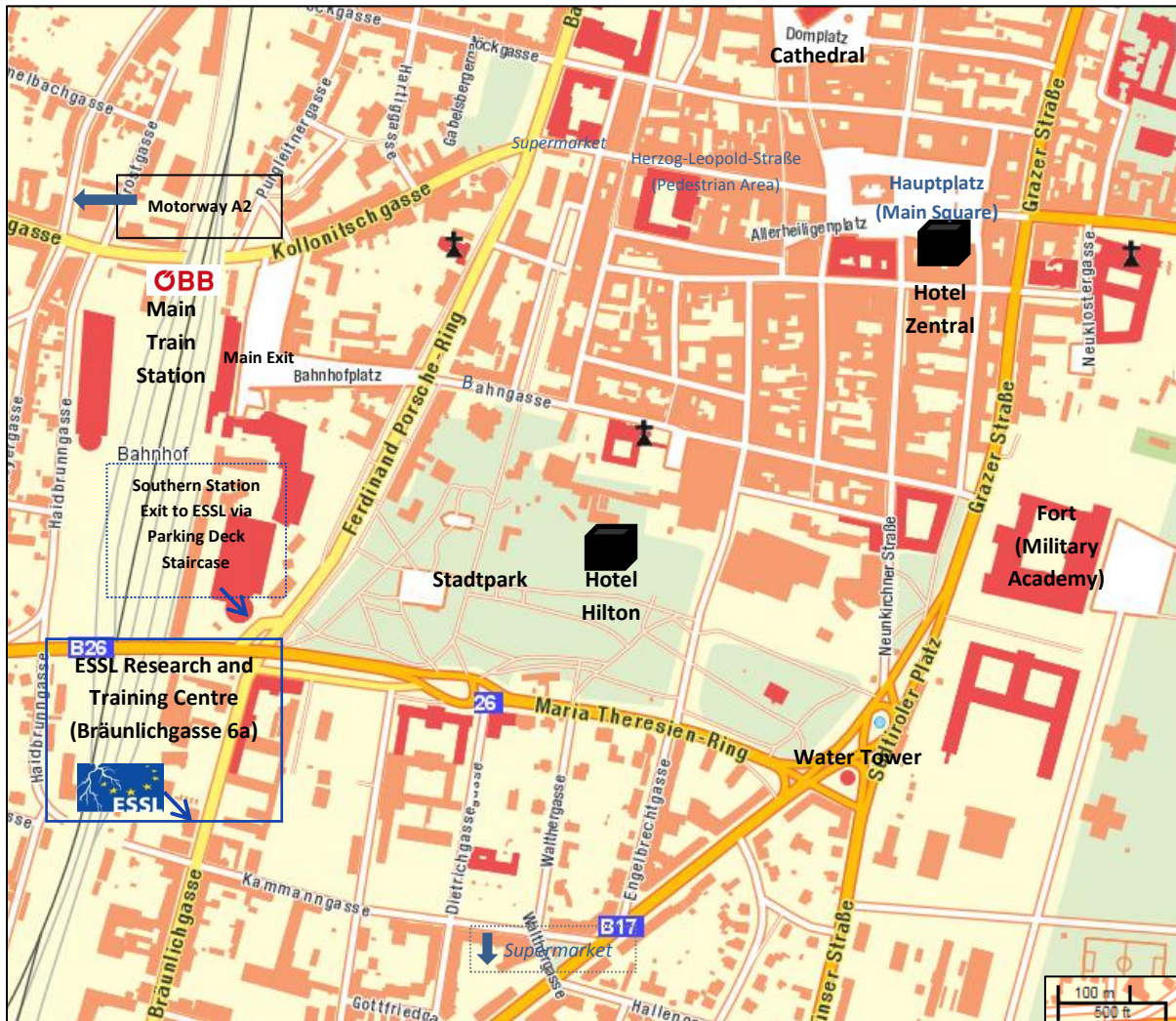
For less urgent questions, please contact us via events@essl.org

Have a safe trip!

Overview Map: Vienna Metropolitan Area

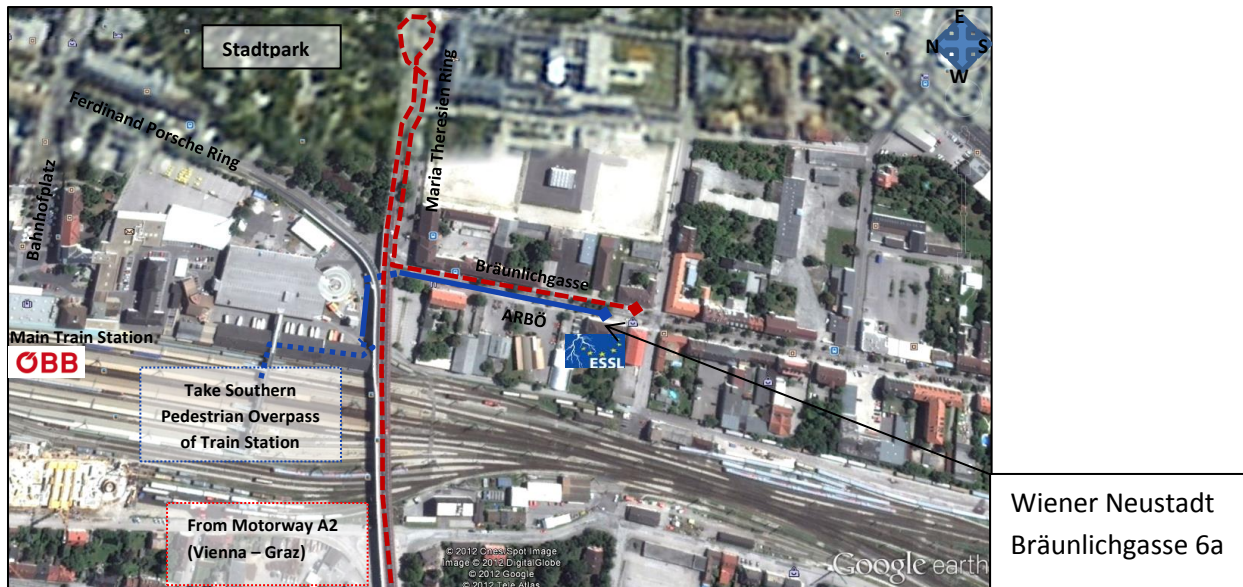


Street-Map: Wiener Neustadt



North is up

Final Approach to the ESSL Research and Training Centre in Wiener Neustadt via car (red) and by foot from train platforms (blue):



East is up

By foot:

From Main Train Station (Wiener Neustadt Hauptbahnhof)

Take - directly from your arrival platform - the southern pedestrian overpass. On top turn to the left, once inside the parking deck, turn to the right. At the end of the aisle, go down the staircase and go to the street in the vicinity (outside the parking area). Now you are already on the crossing of Bräunlichgasse, Ferdinand Porsche Ring and Maria Theresien Ring. Turn to the right into Bräunlichgasse. Then straight ahead until you reach ESSL at no. 6a. *(walking time: about 5 minutes)*

Alternatively you can choose the main station exit, go straight ahead Bahnhofplatz until you reach Ferdinand Porsche Ring after some 300m. At this crossing turn to the right into Ferdinand Porsche Ring until you reach Bräunlichgasse. *(walking time: about 10 minutes)*

From Hotel Zentral and Hilton Garden Inn Hotel

Cross the "Stadtpark" to the west. At the westernmost tip of the park is a crossing, where Bräunlichgasse begins. Follow Bräunlichgasse until you reach ESSL at no. 6a. *(walking time: from Hilton Hotel about 8 minutes, from Hotel Zentral about 15 minutes)*

By car from motorway A2 (Vienna-Graz):

Leave the A2 at exit "Wiener Neustadt West". Drive in the direction to the city centre, straight ahead for about 2,5 km. Immediately after the overpass of the train station railway tracks (a major bridge) you have to bend around (follow the sign "ARBÖ" - an automobile association at the beginning of Bräunlichgasse). Once in Bräunlichgasse follow the street until no. 6a and be lucky to find a parking lot in the street(s) nearby. Parking in the court behind the building is prohibited.

Taxis are available at the main entrance of the train station.



View to Bräunlichgasse from crossing at westernmost tip of Stadtpark (standing under bridge of street B26)



At the beginning of Bräunlichgasse, view to ESSL Research and Training Centre (in the back)

Hotels within walking distance to the ESSL Research and Training Centre

Hotel	Price for Single Room (in brackets special price for ESSL-group reservation – <u>use code word “ESSL”!</u>) *	Remarks
Hotel Hilton Garden Inn **** https://hiltongardeninn3.hilton.com/en/hotels/austria/hilton-garden-inn-wiener-neustadt-VIEWNGI/index.html TEL: +43 2622 29400	91,- to 125,- EUR	Walking distance to ESSL: about 7 to 10 minutes
Hotel Zentral *** www.hotelzentral.at hotel-zentral@hotelzentral.at	67,- EUR (53,50)	Breakfast, W-LAN, minibar, phone, TV, walking distance: about 15 minutes
*Prices as of 2/2019, changes possible		

More hotels in Wiener Neustadt and vicinity:

<http://www.wiener-neustadt.at/images/Dokumente2018/UnterkuenfteWNFebruar2018.pdf>

(in German, but with contact information – English spoken in most of the places)

Tourist Information (Mon-Fri 8-17, Sat 8-12): buenger-tourist@wiener-neustadt.at +43 2622 373 311



Hotel Zentral ***



Hilton Garden Inn **** **NEW**

On 15 February 2019 a new “Hilton Garden Inn” **** hotel opened in the city park of Wiener Neustadt, close to the ESSL premises.

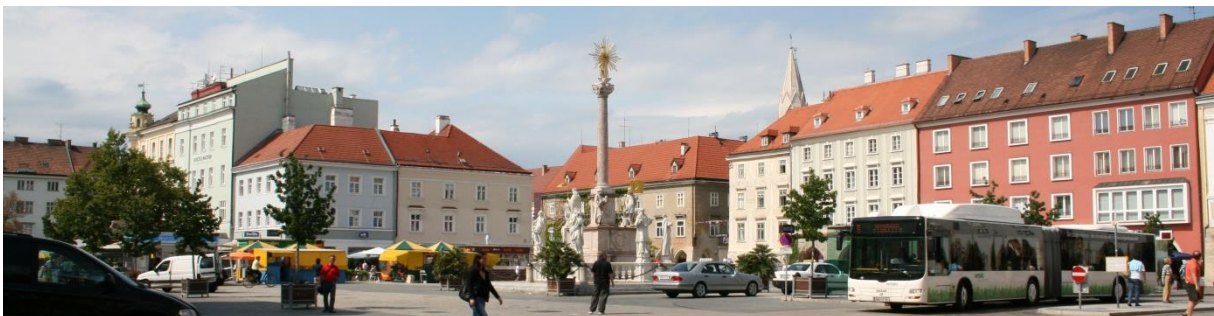
Some sights of Wiener Neustadt

Wiener Neustadt has the right to call itself a city (Statutarstadt) because of its rich history (seat of emperors Friedrich III and Maximilian I in the 15th century, as well as bishops), being founded on bare ground in the year 1195 (Nova Civitas) for strategic reason. The town was heavily destroyed during WW2, when only 18 houses remained undamaged. Many historic buildings have been renovated in the second half of the last century.

Nowadays the centre of the town (41.000 inhabitants) breathes a relaxed and young spirit, because of large pedestrian areas, a university of applied sciences (for business, engineering, health studies, sports and security) and many schools around. Wiener Neustadt can be reached from Vienna by train and by car within less than half an hour and from Vienna International Airport within 45 minutes.



Water Tower and Fort ("Burg", the oldest military academy of the world, founded by Empress Maria Theresia in 1752, and still in use), also housing the St. Georges Cathedral (seat of the military bishop and tomb of emperor Maximilian I)



Hauptplatz (main square) with market (Marienmarkt)

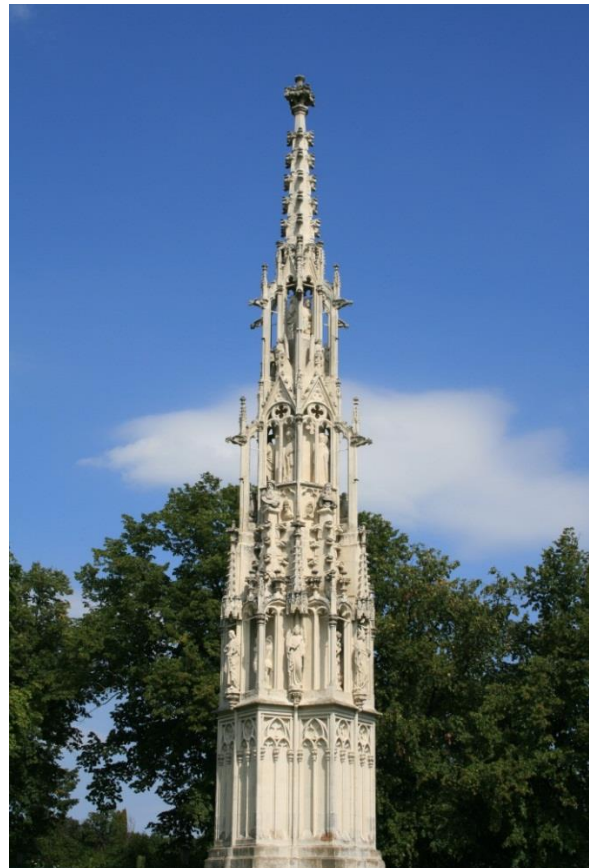
During 2019 the large exhibition "Niederösterreichische Landesausstellung" (**Lower Austria State Exhibition**) takes place at several venues in and around the town. One of the main sites will be the "Kasematten", very close to the ESSL Research and Training Centre in the Stadtpark (City park) area. More information in English language you can find here:

https://www.noelandesausstellung.at/en?set_language=en





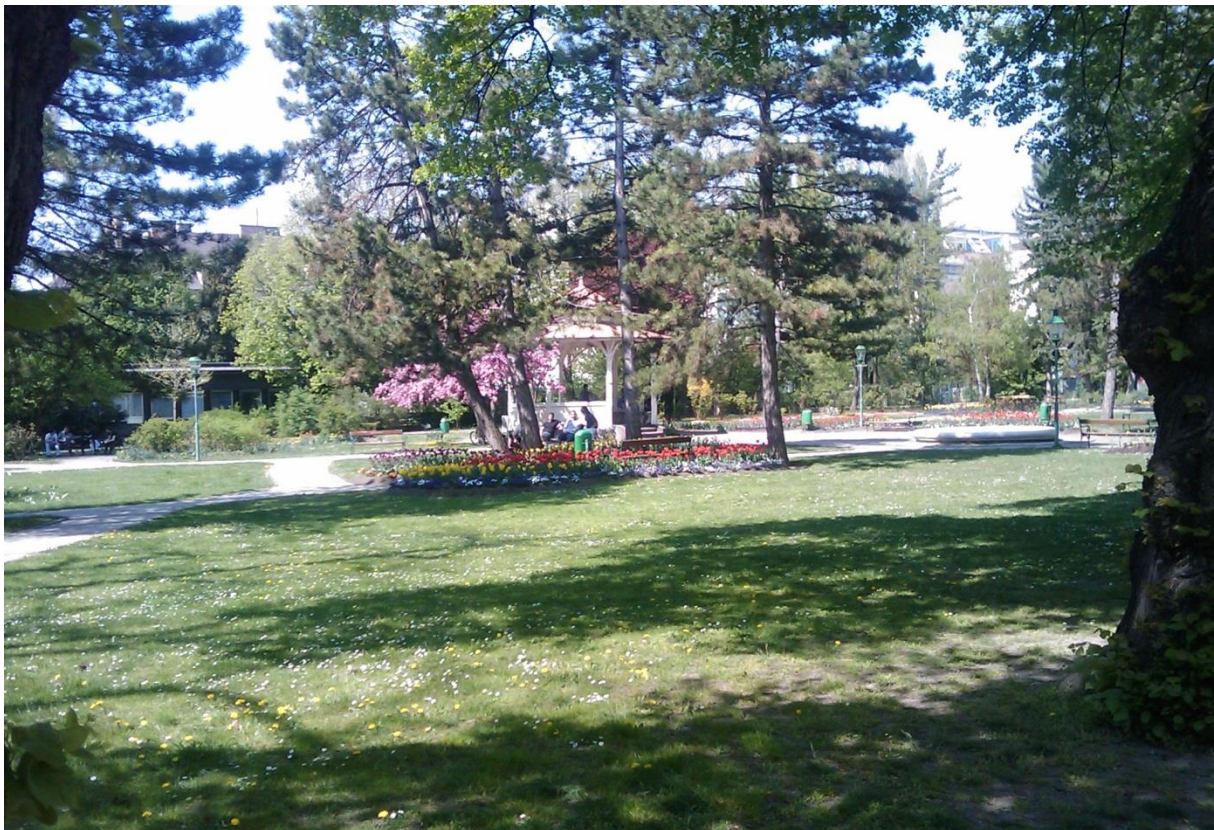
Hauptplatz at the beginning of Herzog Leopold Straße with street cafes and Cathedral (“Dom”, in late Romanesque style) - view from Wiener Straße



Gothic memorial (“Spinnerin am Kreuz”) in “Walther von der Vogelweide Park”



Tornado memorial (35 deaths in 1916) at the municipal cemetery



Municipal Park – “Stadtpark” (5 minutes walking distance from ESSL Research and Training Centre)