



**ESSL**  
c/o DLR, Institut für Physik der Atmosphäre  
Münchener Str. 20, Geb. 120  
82234 Wessling  
Germany

Phone: (+49) 151 59031839  
(+49) 8153 281845  
Fax: (+49) 8151 96599911  
E-mail: eb@essl.org  
Internet: www.essl.org

## European Severe Storms Laboratory Newsletter 2017-2

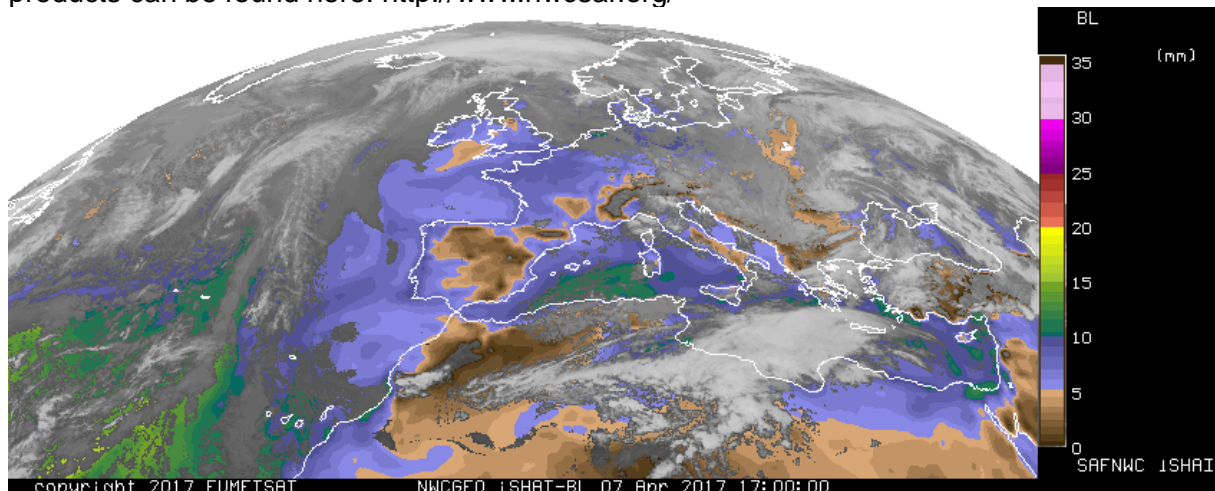
No. 13

June 2017

### EUMETSAT Nowcasting-SAF at ESSL Testbed 2017

Already in past editions of the ESSL Testbed some satellite products were in the focus, such as the instability product by Ralph Petersen (University of Wisconsin), two different convective initiation products, the sandwich product, or cell detection products, to name a few. This year cooperation with the Nowcasting Satellite Application Facility (NWC SAF) will bring a number of new mainly satellite based products to the ESSL Testbed. NWC SAF is being developed by a consortium of National Meteorological Services: AEMet, METEO FRANCE, SHMI and ZAMG.

One of the products tested will be the "iSHAI BL" (Satellite And Humidity Instability Layer Precipitable Water Boundary Layer). See example image below. The full range of NWC SAF products can be found here: <http://www.nwcsaf.org/>



NWC SAF iSHAI BL product example from the NWC SAF webpage

In order to enable the local NWC SAF image production, additional hardware was installed at the ESSL Research and Training Centre in Wiener Neustadt in the first months of 2017, including a new satellite dish as well as adequate reception and production computers. We are in close collaboration with the coordinating colleagues from AEMet. The ESSL team is kindly supported by Jan Kanak from SHMU and Zsofia Kocis from the Hungarian Met-Service.

## New Assistant to the Board - Introduction of Katja Dorninger



Early this year, our new Assistant to the Board, Katja Dorninger, started working at ESSL. We would like to introduce her to you via a little interview:

**ESSL:** Miss Dorninger, what was your first impression about ESSL and its activities, when you first got in touch with us?

**KD:** Research, Science and weather phenomena. That sounds interesting and roused my exploratory spirit.

**ESSL:** What do you think is the most fascinating part of ESSL?

**KD:** The transnational cooperation, the structure of the ESSL with its smaller units and the collaboration on a joint goal.

**ESSL:** Why did you want to start working for ESSL?

**KD:** Every beginning holds its own magic. Even storms start small, take the potential of the area, define their scope and go their way.

Scientists live for their area of expertise. I share this enthusiasm and like to actively participate. The structure and size of ESSL require multifunctional capabilities from purely book keeping to organizing and accompanying meetings and seminars. This work is manifold and fertile for my development.

**ESSL:** What are the main challenges you see within your area of responsibility within the coming year?

**KD:** I would like to get to know better my area of responsibility and its framework to identify where I can support ESSL best. I am lucky to operate in different fields.

**ESSL:** Thank you Miss Dorninger for the interview!



## ECSS 2017

The European Severe Storms Laboratory has the pleasure to invite you to the 9<sup>th</sup> European Conference on Severe Storms (ECSS) in Pula, Croatia, 18-22 September 2017.

The deadline of the ECSS early bird fee is **15 June 2017**.

The ECSS 2017 will deal with the following topics:

- Convective storm and tornado dynamics
- Numerical modelling of storms, storm-scale data assimilation
- Impact of on society, impact mitigation and early warning systems
- Convective storms within extratropical, Mediterranean and tropical cyclones
- Floods and flash floods
- Forecasting and nowcasting of severe weather
- Severe weather forecast training
- Satellite studies of storms and their environment
- Radar studies of storms
- Storm electrification, lightning, microphysics and hail
- Storm climatologies, risk assessments and climate change
- Collection of storm data, historical events and damage assessments

For more information please visit [www.ecss.eu](http://www.ecss.eu)

Pula awaits you!



ECSS 2017 is made possible by:





European Severe  
Storms Laboratory

# Summer School on Severe Convection

From 28 August to 1 September 2017  
ESSL Research and Training Centre  
Wiener Neustadt, Austria

[www.essl.org/cms/upcoming-events/essl-summer-school-on-severe-convection/](http://www.essl.org/cms/upcoming-events/essl-summer-school-on-severe-convection/)

The ESSL Summer School focuses on the climatology, formation, and forecasting of flash-floods, convective windstorms, hail lightning, and tornadoes, and also on subtropical and tropical cyclones in the Mediterranean Sea and on climate change and severe storms

The ESSL Summer School features lectures from these leading researchers

**Prof. Marco Borga**  
*University of Padova (Italy)*

**Prof. Michael Kunz**

**Dr. Heinz Jürgen Punge**  
*Karlsruhe Institute of Technology (Germany)*

**Christoph Gatzen**  
*MeteoGroup*

**Tomas Pucik**

**Dr. Bogdan Antonescu**

**Dr. Pieter Groenemeijer**

**Alois M. Holzer**  
*European Severe Storms Laboratory*

The first Summer School on Severe Convection organized by ESSL will be held between 28 August and 1 September 2017 at the ESSL Research and Training Centre in Wiener Neustadt (Austria). The aim of the ESSL Summer School is to provide PhD students, forecasters, emergency and risk managers, and insurers and re-insurers with the most updated advances on severe convection both from a theoretical and practical perspective. The lectures will be given by international recognized scientists in the field of severe convection.

The ESSL Summer School will offer lectures on:

- Methods of forecasting severe convective storms
- Flash-flood climatology, formation and forecasting
- Convective windstorms (downbursts and gust fronts) climatology, formation and forecasting
- Hail climatology, formation and forecasting
- Lightning climatology and formation
- Tornado climatology, dynamics and forecasting
- Subtropical and tropical cyclones in the Mediterranean climatology and formation
- Climate change and severe storms

For the latest updates about the ESSL Summer School please visit:

<http://www.essl.org/cms/upcoming-events/essl-summer-school-on-severe-convection/>

## Upcoming Activity Calendar

Date	Event	Additional information	Registration deadline
28 Aug – 1 Sep 2017	<p><b>ESSL Summer School</b> on Severe Convection</p> <p>Every day another convective hazard, lectures and exercises by different expert lecturers. Climatology, theory, risk and forecasting/warning.</p>		Until fully booked.
4 - 8 Sep 2017	<p><b>EMS Annual Meeting</b> European Conference for Applied Meteorology and Climatology</p>	co-sponsored by ESSL, in Dublin, Ireland	Registration: <a href="http://www.ems2017.eu">www.ems2017.eu</a>
18 – 22 Sep 2017	<p>9<sup>th</sup> European Conference on Severe Storms <b>ECSS 2017</b></p>	in Pula, Croatia	Early bird rate until 15 June 2017.
23 Sep 2017	<p><b>Introduction Seminar</b> Forecasting of Severe Convective Storms</p>	by Dr. Charles A. Doswell III, in Pula, Croatia	Until fully booked. Early rate until 15 June 2017.
2 – 6 Oct 2017	<p><b>Seminar</b> Forecasting Severe Convection I</p>	by Tomas Pucik (ESSL/ESTOFEX)	Until fully booked. Early bird rate until 15 June 2017.
28 – 31 Aug 2018	<p>International Tornado Standard Working Group Meeting and <b>Workshop</b> on Tornado and Windstorm Damage Assessment</p>	by ESSL staff and expert guests.	
3 – 7 Sep 2018	<p>EMS Annual Meeting: European Conference for Applied Meteorology and Climatology</p>	co-sponsored by ESSL, in Budapest, Hungary	
11 – 15 November 2019	<p>10<sup>th</sup> European Conference on Severe Storms <b>ECSS 2017</b></p>	In Krakow, Poland	

The current calendar can always be found on the website: [www.essl.org](http://www.essl.org)

For more information, feel free to contact us at [events@essl.org](mailto:events@essl.org)