



Convective season is just getting started, so you still have time to prepare yourself!

This year **NEW** from **ESSL** - a short series of **free** of charge **1-day refresher webinars!**

These are the first three that the ESSL is organizing this spring:

27 May 2020

“Blue skies or tornado and nothing in between?”

Forecasting convective initiation.

-

3 June 2020

“Know your hodographs”

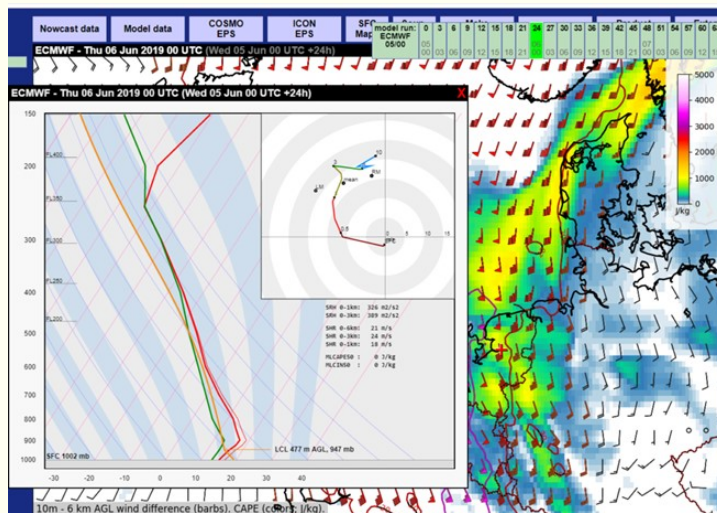
Forecasting convective type and mode

-

10 June 2020

“What are we warning for today?” Forecasting individual hazards

The webinars, or online seminars, will consist of a morning lecture and an afternoon exercise, which will include the preparation of an ESTOFEX-like outlook with a trainer. Each webinar will start at 0800 UTC until 1000 UTC and the practical demonstration will start at 1200 UTC and take until 1400 UTC.



ESSL data interface tool that will be used to make the afternoon forecasts.

How to register for this event? Just send us an e-mail at events@essl.org indicating your name, institution and which of the seminars you will attend. After registering, you will be sent instructions on how to connect to the webinars.

Due to COVID-19 outbreak lots of ESSL training activities are now given remotely. Already two big courses (Convective Storm Dynamic course by Prof. Jeff Trapp and Forecasting Severe Convection by Tomas Pucik and Christopher

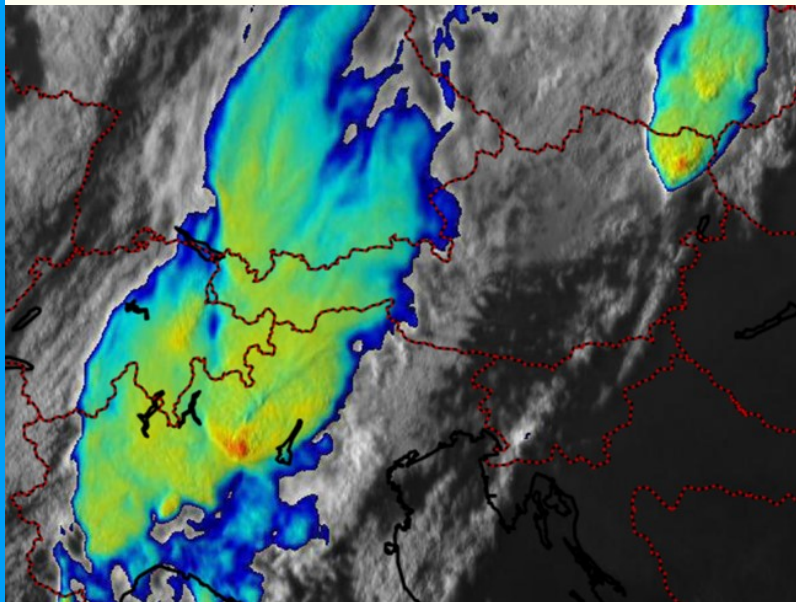
Gatzen) were held online and this year also Testbed will take place online. **You can still register for the regular Testbed weeks (starting on 15 June and 13 July).**



ESSL is planning new courses for this year at ESSL Research and Training Centre, Wiener Neustadt

16 – 19 November 2020: Optimal use of satellite data in forecasting severe convection (in cooperation with [Eumetsat](#))

Use of satellite data to detect the convective initiation and relation of satellite appearance of storms with their intensity, physics and expected hazards.



Severe storms impacting northern Italy and Vienna on 12 August 2019 with pronounced overshooting tops and above-anvil cirrus plumes apparent in the satellite data.

More information about the content of the

course and the daily schedule can be found [here](#).

24 – 26 November 2020: Convective Storm Risk

ESSL researchers and external experts will organize a **two-and-a-half day event** on various aspects of the **risk posed by convective storms**. Presentations will be given about the following topics, and additional topics may be added:

- Convective hazard observations
- Modelling of hazards using physics-based statistical methods
- Translation of hazard occurrence to risk
- Changes in risk due to climate change
- Human impacts of convective storms and vulnerability
- Risk mitigation

A more detailed programme will follow later. The event is directed at researchers, students, risk modellers at universities, reinsurance companies, and weather services. They are invited to give a presentation themselves about any of the above topics or closely related topics in coordination with the organizers. Registration for the event will open later in summer. You may contact pieter.groenemeijer@essl.org to make a suggestion for a contribution.

*if the virus becomes active again, all those events will be turned into online events



ESSL
European Severe Storms Laboratory

[Preferences](#) | [Unsubscribe](#)