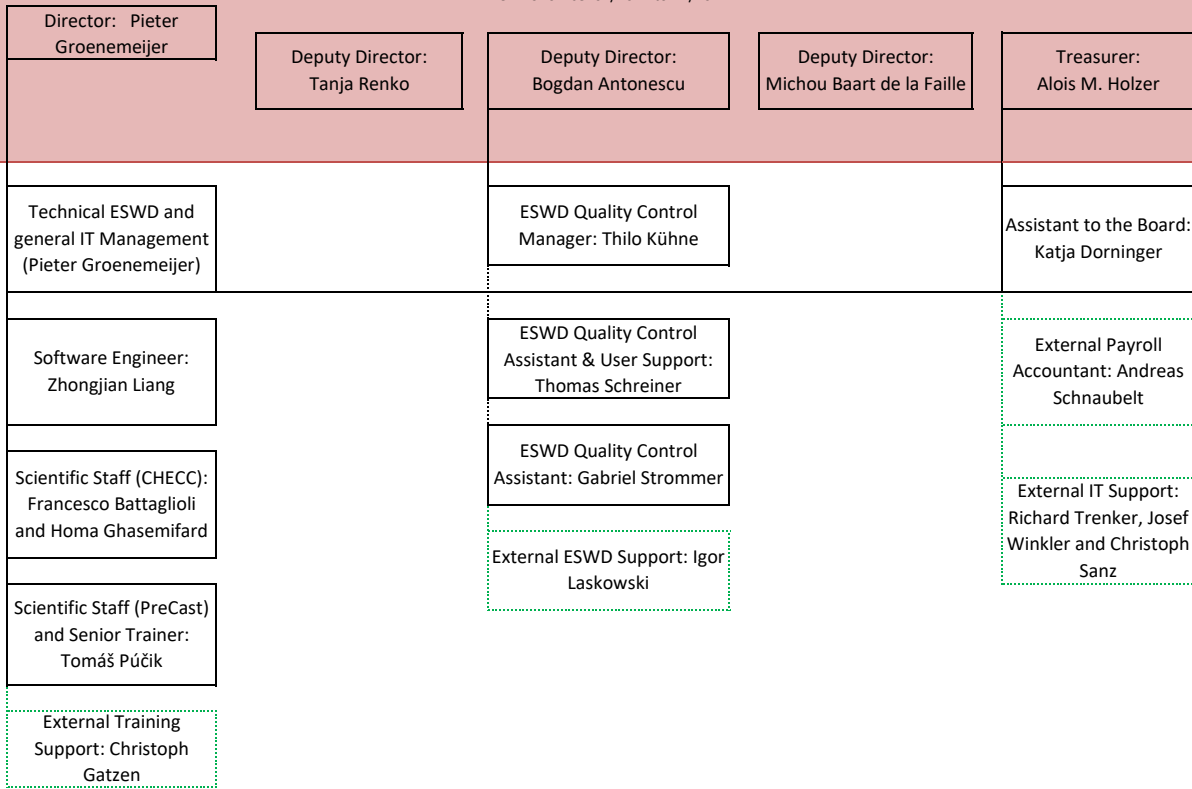


# ESSL Organigram

## General Assembly

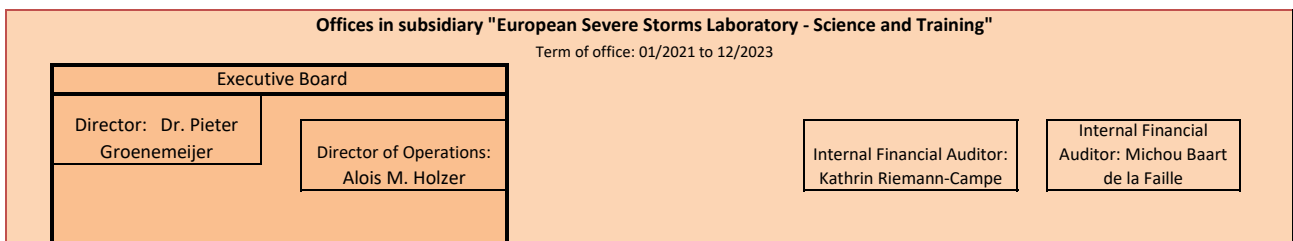
### Executive Board

Term of office: 01/2022 to 12/2024



ESSL Assessors to the Board	Beginning and end of office	If specified, field of activity
Mag. Thomas Krennert	01.10.2010	ESWD
Dr. Bernold Feuerstein	01.01.2012	General ESSL, wind damage
Dr. Tomáš Púčik	01.01.2012	Forecasting practice

The EB can appoint up to 6 Assessors to the Board. Their term of office ends by resolution of the EB or demission.



ESSL EB, last revision on 18 July 2022

No responsibility is taken for the correctness of this information, which is for overview purposes only.

Official assembly and meeting minutes shall prevail.